



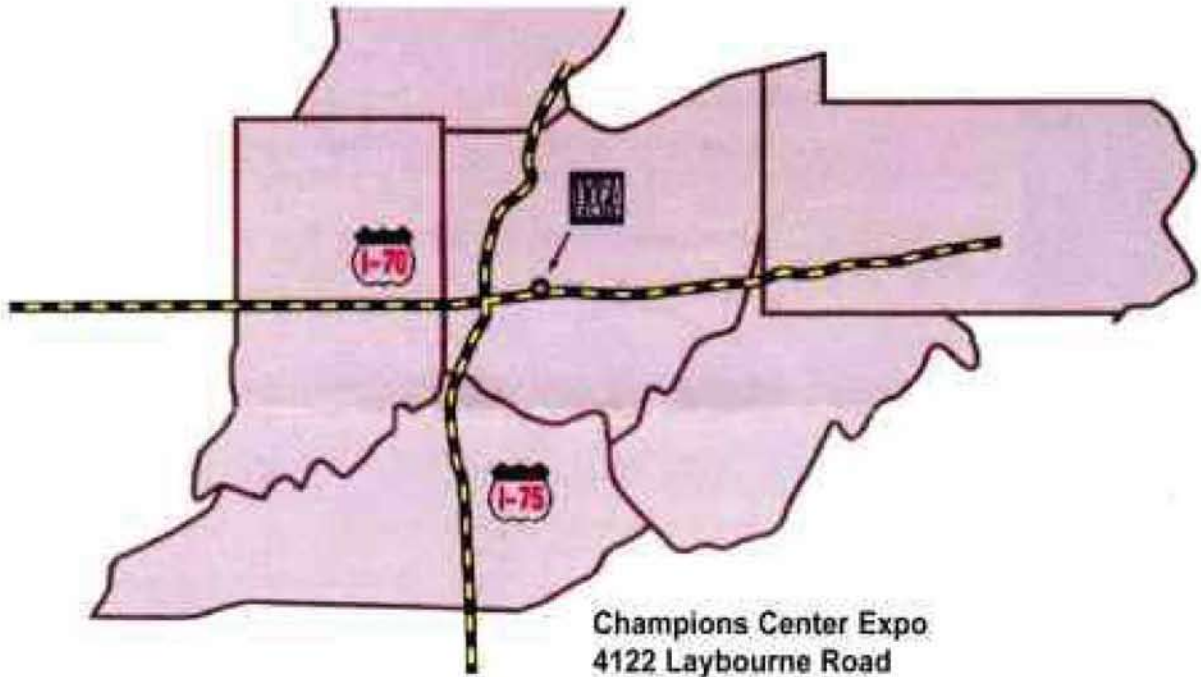
INTERNATIONAL
FRIESIAN SHOW HORSE
ASSOCIATION

GRAND NATIONAL SHOW

*Thursday, September 29th
through
Saturday, October 1, 2022*

*Champions Center Expo
4122 Laybourne Road, Springfield, Ohio 45505*





Champions Center Expo
4122 Laybourne Road
Springfield OH 45505
937-324-4353
www.championscenter.net

A Note from the Championship Horse Show Staff

Everyone, Good Luck and Have Fun!

Your sponsorships and support of our fundraising events, and of our vendors, help make our IFSHA shows throughout the 2022 show season successful. Thank you!

Comfort Suites
121 Raydo Circle
Springfield, OH 45506
(937) 322-0707

Country Inn & Suites
171 W. First St
Springfield, OH 455064
(937) 322-2200

Courtyard Springfield Downtown
100 S. Fountain Ave
Springfield, OH 45502
(937) 322-3600

Fairfield Inn & Suites
1870 W. First St
Springfield, OH 45504
(937) 323-9554

Hampton Inn Springfield
101 W. Leffel Lane
Springfield, OH 45505
(937) 325-8480

Quality Inn Springfield
383 E. Leffel Lane
Springfield, OH 45505
(937) 323-8631

Red Roof Inn
155 W. Leffel Lane
Springfield, OH 45506
(937) 325-5356

The International Friesian Show Horse Association presents

The 2022 IFSHA Friesian
Grand National
Championship Horse Show

Thursday, September 29th through Saturday, October 1st, 2022



Champions Center Expo
4122 Laybourne Road • Springfield, OH 45505
937-324-4353 www.championscenter.net
USEF Licensed for Friesian & Part Bred Friesian Horses #321810 USDF Recognized



Judges

Dressage	Honorable Sue Kolstad
Performance/ Sport Horse In Hand	Honorable Jan Lukens
	Honorable Anne Judd
	Honorable Wayne Hipsley

Officials

Show Manager	Sandra Jacob	Edgerton, WI 608-201-5922 hndshves2@aol.com
Show Secretary	Ryan Chambers	Bonne Terre, MO 314-717-7683 ryan@ringsideproductionsllc.com
Dressage Secretary	Ryan Chambers	ryan@ringsideproductionsllc.com
USEF Show Steward	Kandyce Lazarrus	Sunbury, OH
Dressage T.D.	Patty Littmann	Redmond, OR
Master of Ceremonies	Andy Bailey	New York
Ringmaster	Carl Malicote	Walhalla, SC
Farrier	Jason Raby	
Paramedic	Heather Kaufman	Yellow Springs, OH
Veterinarian	TBA	
Photographer	Avalon Photography	925-922-6300 jolene@avalonphoto.net
Video	Be in View: Mike Kropp	716-270-9336 mikebeinview@gmail.com
Paddock Marshal	Pam Stowe & Mary Loden	Springfield, OH
Hospitality	Samantha Goldman	Gainsville, GA
Awards/Center Ring	DJ Brown & Erin Whalen	
Barn Manager	Sandra Jacob	608-201-5922
IFSHA Executive Director	Debra Goldmann	Gainsville, GA



IFSHA Events

All IFSHA members are invited to participate in all International Friesian Show Horse Association events being held in conjunction with the IFSHA World & Grand Nationals.

ANNUAL GENERAL MEETING

Please join your Board of Directors for the IFSHA 2022 Annual Meeting Saturday afternoon following the Afternoon Session. Location TBA.
Lite lunch & Beverages provided.

Our new Board Members will be announced.

Everyone is welcome to attend the meeting.

Vendor Trade Show

The 2022 IFSHA National Trade Faire vendors will be in the Champions Center Vendor Hall. Friesian artisans, breeders and manufacturers of fine products for person or horse are invited to display their wares. Present *your* business to our Friesian community. Become a part of the show!

Tuesday, September 27th!

The Ohio Valley Friesian Horse Association will host the FHANA Keurig. Location TBA.

Dear USEF Participant,

USEF thanks you for participating in this competition and your support of USEF's continuous efforts to provide the safest environment possible for our athletes and other participants. Strategies for safeguarding athletes continue to evolve, and we are fully committed to keeping pace with best practices.

The purpose of this letter is to remind you that you are bound by the U.S. Center for SafeSport Code, USEF Safe Sport Policy, and Minor Athlete Abuse Prevention Policies, also known as the MAAPP. This includes the SafeSport Training requirement for adult members and participants who have regular contact with minor athletes. Additionally, please be reminded about reporting obligations. Any concerns that are non-sexual in nature, please use the USEF Safe Sport Incident Reporting Form available on the USEF website. Concerns of suspicions regarding sexual misconduct must be reported to <https://safesport.i.sight.com/portal> and the authorities if a minor is involved. All of this information can be found in the USEF Safe Sport Policy.

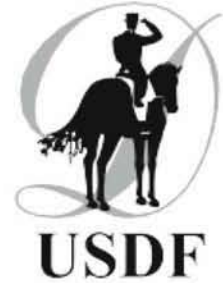
Please take a moment to review the new USEF Safe Sport web pages on the USEF website to find comprehensive resources regarding USEF Safe Sport efforts. You can also contact Sarah Gilbert, USEF Safe Sport Program Coordinator, at sgilbert@usef.org for any questions or concerns relating to the USEF Safe Sport Program.

Thank you for your support and for helping us bring the joy of horse sports to as many people as possible!

2022 IFSHA GRAND NATIONAL CHAMPIONSHIP
Thursday, September 29th through Saturday, October 1st, 2022



THURSDAY, SEPTEMBER 29TH, 2022
Tentatively Scheduled to begin at 8am, Indoor Arena
IFSHA National Championship Friesian/Part Friesian USDF Dressage Classes



Class #	Description
1.	National Champion Friesian Introductory Level Test A
2.	National Champion Part Friesian Introductory Level Test A
3.	National Champion Friesian Introductory Level Test B
4.	National Champion Part Friesian Introductory Level Test B
5.	National Champion Friesian USDF Training Level-Test of Choice
6.	National Champion Friesian USDF Training Level-Test 3
7.	National Champion Part Friesian USDF Training Level-Test of Choice
8.	National Champion Part Friesian USDF Training Level-Test 3
9.	National Champion Friesian First Level- Test of Choice
10.	National Champion Friesian First Level-Test 3
11.	National Champion Part Friesian First Level-Test of Choice
12.	National Champion Part Friesian First Level-Test 3
13.	National Champion Friesian Second Level-Test of Choice
14.	National Champion Friesian Second Level-Test 3
15.	National Champion Part Friesian Second Level -Test of Choice
16.	National Champion Part Friesian Second Level-Test 3
17.	National Champion Friesian Third Level- Test of Choice
18.	National Champion Friesian Third Level- Test 3
19.	National Champion Part Friesian Third Level-Test of Choice
20.	National Champion Part Friesian Third Level- Test 3
20A.	National Champion Friesian Fourth Level - Test of Choice
20B.	National Champion Friesian Fourth Level - Test 3
20C.	National Champion Part Friesian Fourth Level - Test of Choice
20D.	National Champion Part Friesian Fourth Level - Test 3
21.	National Champion Friesian Prix St. Georges-Open
22.	National Champion Friesian Prix St. Georges-Amateur
23.	National Champion Part Friesian Prix St. Georges-Open
24.	National Champion Part Friesian Prix St. Georges-Amateur
25.	National Champion Friesian Intermédiare I-Open
26.	National Champion Friesian Intermédiare I-Amateur
27.	National Champion Part Friesian Intermédiare-I-Open
28.	National Champion Part Friesian Intermédiare I-Amateur
29.	National Champion Friesian Intermédiare-II-Open
30.	National Champion Friesian Intermédiare II-Amateur
31.	National Champion Part Friesian Intermédiare-II-Open
32.	National Champion Part Friesian Intermédiare II-Amateur
33.	National Champion Friesian Grand Prix-Open
34.	National Champion Friesian Grand Prix-Amateur
35.	National Champion Part Friesian Grand Prix-Open
36.	National Champion Part Friesian Grand Prix-Amateur
37.	National Champion Friesian USDF Musical Freestyle
38.	National Champion Part Friesian USDF Musical Freestyle
39.	National Champion Friesian USDF Pas de Deux
40.	National Champion Part Friesian USDF Pas de Deux

**Ridden Dressage
(English)
Limited to 60
(See Show Rule 29)**

EXHIBITOR must specify on the Dressage Entry Form the Division to be entered, Open, Amateur or Junior Exhibitor. ENTRIES must be received by September 1, 2022. Rides to be limited to 60 rides.

Dinner Break Court to be Removed

Thursday Evening Classes to Tentatively begin at 6pm

2022 IFSHA GRAND NATIONAL CHAMPIONSHIP
Thursday, September 29th through Saturday, October 1st, 2022



THURSDAY EVENING, SEPTEMBER 29TH, 2022
Tentatively Scheduled to begin at 6pm, Indoor Arena
IFSHA National Championship Friesian/Part Friesian USDF Dressage Classes

Class #	Description
41.	National Champion Friesian English Pleasure Hunt Seat-Open
42.	National Champion Part Friesian Fantasy/Period Costume Class
43.	National Champion Friesian Show Hack-Amateur *Presentation of the Joyce V. Rohloff Memorial English Show Hack-Amateur Perpetual Trophy*
44.	National Champion Friesian Lead Line W/T 10 And Under
45.	National Champion Part Friesian Country English Pleasure Saddle Seat W/T-Open
46.	National Champion Part Friesian Hunt Seat-Open *Presentation of the Harper JR Part Bred Hunt Seat Open Perpetual Trophy
47.	National Champion Friesian Country Pleasure Driving-Open
48.	National Champion Part Friesian Western Pleasure-Open
49.	National Champion Friesian Armored Costume Class *Presentation of the Friesian Quest Armored Costume Perpetual Trophy*
50.	National Champion Part Friesian English Pleasure Hunt Seat-W/T-Jr. Exhibitor
51.	National Champion Friesian English Pleasure Saddle Seat-Amateur
52.	National Champion Friesian Western Pleasure-Open
53.	National Champion Friesian English Pleasure Hunt Seat-W/T-Jr. Exhibitor

FRIDAY, SEPTEMBER 30TH, 2022
Tentatively Scheduled to begin at 8AM
In Hand Division



54.	National Champion Friesian Fillies 2 & Under
55.	National Champion Part Friesian Fillies 2 & Under
56.	National Champion Friesian Jr. Mares (3-5 Years) * Presentation of the Angela M. Junior Friesian Mare Perpetual Trophy*
57.	National Champion Part Friesian Mares 3 and Over
58.	National Champion Friesian Senior Mares 6 and Over
59.	National Champion Part Friesian Mares 6 and Over
60.	National Champion Baroque Friesian Mares- All Ages
61.	National Champion Friesian Geldings 3 and Under
62.	National Champion Part Friesian Geldings-All Ages
63.	National Champion Friesian Senior Geldings-4 and Over
64.	National Champion Baroque Friesian Geldings-All Ages
65.	National Champion Friesian Colts 2 and Under
66.	National Champion Part Friesian Colts and Stallions-All Ages
67.	National Champion Friesian Junior Stallions (3-5 years)
68.	National Champion Senior Stallions 6 and Over
69.	National Champion Baroque Stallions-All Ages

Break





FRIDAY, SEPTEMBER 30TH, 2022 (continued)
Horses will be Shown on the Triangle
The Triangle will be adjusted to fit the arena.

Class #	Description
70.	National Champion Friesian Fillies 3 and Under
71.	National Champion Friesian Mares 4 and Over
72.	National Champion Part Friesian Mares-All Ages
73.	National Champion Friesian Geldings-All Ages
74.	National Champion Part Friesian Geldings-All Ages
75.	National Champion Friesian Colts-3 and Under
76.	National Champion Part Friesian Colts and Stallions-All Ages
77.	National Champion Friesian Stallions 4 and Over

Break to remove the Triangle

Afternoon Classes Tentatively Scheduled to Begin at 3pm

78. National Champion Part Friesian Country English Saddle Seat-Amateur
79. National Champion Friesian Carriage Pleasure Driving Turnout-Single-Open
Richard Snavelly Memorial Pleasure Driving Turnout-Single-Open Perpetual Trophy
80. National Champion Friesian English Pleasure Hunt Seat-Jr. Exhibitor
81. National Champion Part Friesian Dressage Suitability-Amateur
82. National Champion Part Friesian Masters Class W/T Any Seat (Eng. OR Western)-Amt.
83. National Champion Friesian Country Pleasure Driving -Amateur
84. National Champion Part Friesian English Pleasure Hunt Seat-Amateur
85. National Champion Part Friesian Sport Pleasure Driving-Open
86. National Champion Friesian English Pleasure Hunt Seat-W/T Novice
87. National Champion Part Friesian English Pleasure Saddle Seat-Open

Break

Evening Classes Tentatively Scheduled to Begin at 6:00 PM

88. National Champion Friesian Fine Harness Class-Open
89. National Champion Friesian Period Costume Class
90. National Champion Friesian Show Hack-Open
91. National Champion Part Friesian Country English Pleasure Saddle Seat-Open
92. National Champion Friesian Dressage Suitability-Amateur
93. National Champion Friesian/Part Friesian Lead Line Costume- 10 & UNDER
94. National Champion Friesian Country English Pleasure-Open
95. National Champion Part Friesian Country Pleasure Driving
96. National Champion Friesian English Pleasure Hunt Seat-Amateur
97. National Champion Part Friesian Show Hack-Open
98. National Champion Friesian Carriage Driving Reinsmanship-Single-Open
99. National Champion Friesian Park Saddle Seat-Open
Friesian Focus Saddle Seat Park Perpetual Trophy
100. National Champion Friesian English Pleasure Hunt Seat W/T-Amateur
* The USEF Retirement sponsored by Ashby Equestrian Center, Ashby, MA



SATURDAY, OCTOBER 1ST, 2022
Tentatively Scheduled to begin at 8am
in the Indoor Arena

- | Class # | Description |
|---------|-----------------------------------------------------------------------------------|
| 101. | National Champion Friesian Show Pleasure Driving-Amateur |
| 102. | National Champion Friesian English Pleasure Hunt Sear-Jr. Horse (3-5 Yrs)-Open |
| 103. | National Champion Part Friesian Western Pleasure-Amateur |
| 104. | National Champion Part Friesian English Pleasure Hunt Sear-Jr. Exhibitor |
| 105. | National Champion Friesian Country English Pleasure-Amateur |
| 106. | National Champion Part Friesian Show Pleasure Driving-Open |
| 107. | National Champion Friesian Western Pleasure-Amateur |
| 108. | National Champion Part Friesian English Pleasure Hunt Seat-W/T-Amateur |
| 109. | National Champion Part Friesian English Pleasure Hunt Seat-W/T-Novice |
| 110. | National Champion Friesian English Pleasure Saddle Seat-W/T Open |
| 111. | National Champion Part Friesian Country English Pleasure Saddle Seat-W/T-Amateur |
| 112. | National Champion Friesian Western Pleasure W/Jog-Open |
| 113. | National Champion Part Friesian English Pleasure Saddle Seat-Amateur |
| 114. | National Champion Part Friesian Western Pleasure W/Jog-Open |
| 115. | National Champion Friesian English Pleasure Saddle Seat W/T Jr. Exhibitor |
| 116. | ** TBA Sponsored Class |
| 117. | National Champion Friesian English Pleasure Saddle W/T Novice Exhibitor |
| 118. | National Champion Part Friesian English Pleasure Saddle Seat W/T -Amateur |
| 119. | National Champion Friesian Drive And Ride Same Whip/Same Rider W/T-Open |
| Break | |
| 120. | National Champion Friesian Carriage Pleasure Driving-Costume |
| 121. | National Champion Friesian Country English Pleasure W/T-Amateur |
| 122. | Opportunity Lead Line Class-Open To All Breeds |
| 123. | National Champion Friesian English Pleasure Saddle Seat W/T Amateur |
| 124. | National Champion Friesian/Part Hunt Seat Equitation- W/T-Jr. Exhibitor |
| 125. | National Champion Part Friesian English Pleasure Saddle Seat W/T Jr. Exhibitor |
| 126. | National Champion Friesian English Pleasure Saddle Seat-Jr. Horse (3-5 Years) |
| 127. | National Champion Friesian Western Pleasure W/Jog-Amateur |
| 128. | National Champion Part Friesian Country English Pleasure W/T Junior Exhibitor |
| 129. | ** TBA -Sponsored Class |
| 130. | National Champion Part Friesian Western Pleasure W/J-Amateur |
| 131. | **TBA Sponsored Class |
| 132. | National Champion Part Friesian English Pleasure Saddle Seat-Jr. Horse 3-5 Years) |
| 133. | National Champion Part Friesian English Pleasure Saddle Seat Jr. Exhibitor |
| 134. | National Champion Friesian Show Pleasure Driving-Open |

Break

*** IFSHA Annual General Meeting – Location TBA ***
Saturday Afternoon following the Afternoon Session!



A copy of your SafeSport Certificate of Completion must be submitted with entry if you are 18 years old & over, unless completion is printed on your USEF Membership Card.



SATURDAY, OCTOBER 1ST, 2022
Evening Classes Tentatively Scheduled to begin at 6pm

Class #	Description
	* Thank You to honor the memory of the Honorable Grace Greenlee
135.	National Champion Friesian Concours De Elegance
136	National Champion Friesian Dressage Hack-Open
137.	National Champion Fantasy Costume Class
138.	National Champion Friesian Sport Pleasure Driving-Open
139.	National Champion Part Friesian English Pleasure Hunt Seat W/T Open
140.	National Champion Part Friesian Carriage Pleasure Driving-Open
142.	National Champion Friesian English Pleasure Saddle Seat Junior Exhibitor
143.	National Champion Friesian Country English Pleasure Saddle Seat W/T Open
144.	National Champion Part Friesian Dressage Hack-Open
145.	National Champion Friesian English Pleasure Saddle Seat Open- *Presentation of the Robin ut de Warren Memorial English Pleasure Saddle Seat Perpetual Trophy
146.	National Champion Friesian Dressage Suitability-Open
147.	National Champion Friesian Master Class All Seats W/T -Amateur *Presentation of the Dennis Gardner Memorial Walk/Trot Masters 50+ Perpetual Trophy*
148.	National Champion Part Friesian English Pleasure Saddle Seat W/T-Open
150.	National Champion Part Friesian Dressage Suit-Open
151.	National Champion Friesian English Pleasure Hunt Seat W/T-Open

Show Closes!
Thank you for attending. See you next year!

High Point Trophies will be announced after the show is closed and scores are audited.
The listing of trophies is on the next page.

Qualification for the IFSHA World & Grand National Show

It is the *horse only that needs to be qualified*, not the exhibitor. Each horse that is entering the World & Grand National Show needs only to have been "Shown and Judged" in one regular USEF licensed Friesian class A test in a USEF/USDF licensed Dressage show will also count toward qualification. The horse *does not* need to place. The horse *does not* need to have exhibited in each division in which it is entered at the World & Grand National Show. *For the 2022 IFSHA World & Grand National Show, Horses 2 Years & Under will not be required to qualify.*

IFSHA members are encouraged to enter your local and Regional Championship shows to gain experience in the ring and knowledge about class rules, tack and attire. Please indicate show name, date, location and class where horse qualified in the appropriate space on your entry blank.

Horses that need to qualify for the IFSHA Grand National Show and were planning on attending the qualifying day of the IFSHA Grand National Show will receive a "Special Circumstance" Waiver for 2022. Email Show Manager, Sandy Jacob at hndsnhves2@aol.com with name of horse and owner that is to receive a waiver.



2022 *World & Grand* National Special Trophies

IFSHA Founders' Award

Awarded to the nominated IFSHA member in recognition of outstanding efforts on behalf of IFSHA, in honor of the efforts of the IFSHA Founding Board Members. Sponsored by the IFSHA Board of Directors.

IFSHA President's Award

Awarded to the nominated IFSHA member in recognition of their contributions to the improvement and success of the USEF Friesian Show circuit. Sponsored by the current IFSHA President, Sandy Jacob.

***Shakespeare Farm Purebred Friesian High Point Perpetual Trophy**

Awarded to the Purebred Friesian All-Around High Point World & Grand Nationals winner, which shall also include at least one World or National title in any category and points accumulated in any purebred class during the World & Grand Nationals show. In honor of inaugural winner Shakespeare. Donated by Kimberly and David Ramirez of Shakespeare Farm.

***Leoness Sport Horses Part Bred Friesian High Point Perpetual Trophy**

Awarded to the Part Bred Friesian All-Around High Point World & Grand Nationals winner, which shall also include at least one World or National title in any category and points accumulated in any part bred class during the World & Grand Nationals show. In honor of inaugural winner LSH Cadence in Color. Donated by Nikki Lugli of Leoness Sport Horses.

Gareth A. Selwood

Part Bred Friesian In Hand High Point Perpetual Trophy

Awarded to the Part Bred Friesian horse accumulating the highest number of points in Open and Amateur In Hand classes at the IFSHA World & Grand National Championship Show. Donated and sponsored by D. J. Brown & Sandy Jacob.

***Anita Mellott Memorial Driving High Point Perpetual Trophy**

Awarded to the driving horse accumulating the highest number of driving points at the IFSHA World & Grand National Championship Show. In honor of Anita Mellott, in memory of her passion for carriage pleasure and competitive driving. Donated by John Mellott of Black Horse Valley Ranch.

Nancy Nathanson

Youth High Point Award Perpetual Trophy

Donated anonymously and in Memory of Nancy Nathanson, past Executive Director and Show Secretary of the IFSHA Association. Only Junior Class points will apply toward the awarding of this trophy. Donated & sponsored anonymously.

Harper JR Part Bred Hunt Seat Open Perpetual Trophy.

The Trophy will be awarded to the class Champion immediately following the Part Bred Hunt Seat Open Class. Donated and sponsored by the Riehl Family.

Angela M Junior Friesian Mare Perpetual Trophy

Awarded to the winning World Champion Purebred Friesian Junior Mare. Donated and sponsored by Karen Aneiro in memory of her beloved mare, Angela M.

***Friesian Quest Armored Costume Open Perpetual Trophy**

Awarded to the winning World Champion Friesian Armored Costume Open Purebred Friesian. In honor of inaugural winner Selma of Friesian Quest. Donated by Tammy and Robert Hildreth, DVM, of Friesian Quest.

Dreams Come True Farm

Driven Dressage Perpetual Trophy

Awarded to the Pure-Bred Friesian with the best Driven Dressage score. In honor of Spaartje Sport's excellence in driven dressage, which earned her the first Driving Predicate title outside of the Netherlands. Donated and sponsored by Gail Aumiller & Thomas Heverlin of Dreams Come True Farm.

***Richard Snavelly Memorial Pleasure Driving Turnout Single Open Perpetual Trophy**

Awarded to the winning National/World Champion Friesian Pleasure Driving Turnout Single Open Purebred Friesian. In memory of Richard Snavelly who passed away April 1, 2005. His presence in the arena will be truly missed. Donated by Tammy and Robert Hildreth, DVM, of Friesian Quest.

***Friesian Focus Saddle Seat Park Horse Open Perpetual Trophy**

Awarded to the winning World Champion Saddle Seat Park Open Purebred Friesian. Donated by Joan and Joseph Fernandez of Friesian Focus.

***Robin ut de Warren Memorial English Pleasure Saddle Seat Open Perpetual Trophy**

Awarded to the winning World Champion English Pleasure Saddle Seat Open Purebred Friesian. In honor of Robin ut de Warren, a goodwill ambassador for the Friesian Horse. Donated in loving memory by Janna Giles.

Joyce V. Rohloff Memorial

English Show Hack Amateur Perpetual Trophy

Awarded to the winning World Champion Friesian English Show Hack Amateur. In memory of Joyce V. Rohloff, Sandy Jacob's mother, who always encouraged her daughter's involvement with horses. Donated and sponsored by Thomas & Sandy Jacob.

Dennis Gardner Memorial Walk/Trot Masters 50+ All Seats Perpetual Trophy

Awarded to the winner of the World Champion Friesian Pleasure Walk/Trot Masters All Seats. In memory of Dennis Gardner. Donated and sponsored by Dr. Pamela Gardner.

Shakespeare Farm High Point—Sponsored by IFSHA
Leoness Sport Horse Part Bred—Sponsored by IFSHA



IFSHA Show Guidelines for 2022

1. Class Scratch refunds will no longer be allowed without a note from the vet. You are welcome to exchange a class for the same horse and rider. Please do this at the time of the scratch.
2. Class Additions must be done prior to the class session and according to this schedule:
 - Morning Additions will need to be done by 6:00 PM the evening before.
 - Afternoon Additions will need to be done by 10:00 AM the day of the class.
 - Evening Additions will need to be done by 2:00 PM the day of the class.
3. Four Gate holds per session with a maximum of 5 minutes will be available and must be requested before the start of each session.
4. A Two Minute Gate Hold will be Observed
5. The paddock Marshall will maintain on “On Deck” Arena. This will be for the next class only.
6. The Warm Up Arena will be the outdoors arena directly across from the indoor.
7. When entering the “On Deck” arena, it is the exhibitor’s responsibility to physically check in with the Paddock Marshall. Please do not assume “that the Paddock Marshall knows I am here”.
8. All Exhibitors must leave the stabling area by 10:00 AM Sunday

Show Management reserve the right to change, reschedule or cancel classes due to scheduling or weather.

IFSHA CODE OF CONDUCT

All members of the International Friesian Show Horse Association (IFSHA) believe our conduct matters for both the well-being of the association and its members. We as an association are formed to promote the breeding, care, and showing of Friesian Show Horses.

As members our conduct transcends all areas of our goals and includes how we deal with each other internally, and how we deal with the industry as a whole.

Our Code of Conduct sets forth our basic ethical standards and core values that are applicable to all of us. It helps guide us on how we conduct our association and activities.

All members are responsible for understanding and complying with the IFSHA Code of Conduct.

All members are expected to:

- Promote ethical behavior at all shows and activities of IFSHA
- Respect all other members and refrain from disparaging remarks about or acts that are unethical.
- Promote the humane care of horses
- Promote the Association in a favorable light to the public and the industry.
- Comply with this Code of Conduct, knowing that failure to do so may result in punitive action by IFSHA, up to and including termination of membership.

BEST OF LUCK EXHIBITORS!

Avalon
PHOTOGRAPHY

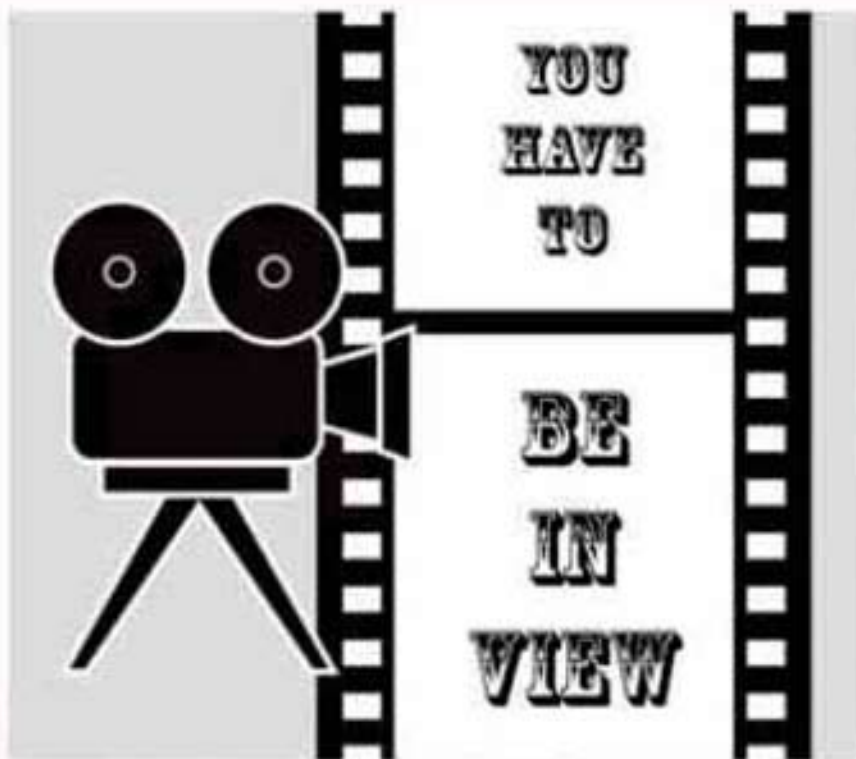


**Official Photographer
for the
IFSHA Grand National
Horse Show**

www.avalonphoto.net

Jolene Bertrand, Photographer jolene@avalonphoto.net 952-922-6300

Online proofs - Facebook upload with purchase



*Let us help you with
all your video needs.*

*We offer a full range of
video production
options.*

*From raw video
to fully edited
promotional
DVDs*

***We are proud to be the Official Video Service of the
IFSHA World Championship Show!!!***

*Make your plans early as cameras are available on
first come/first served basis.
Contact us anytime with your orders.*

Pricing at the show (all videos on DVD):

First class - \$60. Each additional class (same horse/owner) - \$50

Pre-Orders at \$50.00 a class and \$40.00 for additional!!

So book your orders ahead of time to be sure to have a camera!

Be In View

Contact:

Mike Kropp 716-270-9636

Email: mikebeinview@gmail.com

*Also available for farm shoots,
events, clinics, what ever your needs
we will work with you to allow you to*

Be In View



2022 IFSHA GRAND NATIONAL SHOW FEE SCHEDULE



Stalls/Tack/ Ready/Fee Rooms * No First Bedding*	\$150.00 (9/29-10/1)
Bedding/Shavings (Tentative)	\$9.00 per square
Hospitality Stalls	\$80.00
Overnight Stalls (In one day and out by 9 am the next morning	\$100.00
Day Stalls (In and out in one day)	\$80.00
CLASS ENTRY FEES	
National Championship Classes	\$100.00
Junior Exhibitor Championship Classes	\$50.00
National Champion Lead Line W/T (Class 44)	\$100.00
National Champion Lead Line Costume (Class 93)	\$100.00
Opportunity Lead Line-Open to All Breeds (Class 122) (No memberships required for this class)	\$25.00
 ALL Friesian and Part Bred Friesian Horse Owners/Lessees and Horses Must be members of IFSHA.	
Owner must be member of IFSHA	\$60.00 per owner/annual
Horse must be a member of IFSHA	\$50.00 per horse/annual
New Memberships for Horse and Owners are to be completed through the IFSHA office at least 5 days in advance of the IFSHA Grand National Show	
IFSHA Non Member-Non-Owner	\$25.00 per adult/non-owner
IFSHA Non Member-Non Owner-Youth	\$20.00 per youth/non-owner
USEF Fee (\$15.00 for USEF/\$8.00 drugs/medications)	\$23.00 per horse
USEF SINGLE EVENT Show Pass (if applicable)	\$45.00 per person
** Open and Junior Rider non- members Only. USEF Amateur Rider MUST be a member of USEF**	
Office Fee	\$35.00 per horse
Early Arrival Fee (IFSHA KEURING ENTRIES)	\$20.00 horse
IFSHA National Show Move in Day is Wednesday 9/28/2022	
Late Departure (must be approved by the Champions Management)	\$45.00 per horse/day
RV Space/Camping Site	\$50.00 per night
NSF Office Fee	\$50.00
Check Bank NSF Fee	\$25.00
Credit Card Processing Fee	3.5%
Credit Card Decline Fee	3.5%
Class Sponsorships	\$100.00
Perpetual Trophy Sponsorship	\$150.00
Banner (Inside Arena)	\$175.00

AN OPEN CHECK/CASH/OR CREDIT CARD NUMBER WILL BE REQUIRED BEFORE
EXHIBITOR NUMBERS CAN BE PICKED UP FROM THE HORSE SHOW OFFICE.

OWNER

Please Name of Liquid Owner (Signature on Back)

Street or PO Box of Owner on Back

City State Zip

Cell Phone # of Owner

USDF #

USDF #

TRAINER

Please Name of Trainer (Signature on Back) and Ranch/Trainer Name

Street or PO Box of Trainer

City State Zip

Cell Phone # of Trainer

USDF #

USDF #

BACK NO.

2022 IFSHA World & Grand National
Championship Horse Show
Sept. 29th through Oct. 1st, 2022
Champions Center Expo • Springfield, Ohio

Information on both sides of form must be completed.

OWNER

Please Name of Liquid Owner (Signature on Back)

Street or PO Box of Owner on Back

City State Zip

Cell Phone # of Owner

USDF #

USDF #

Please type or print. One horse per entry form. Entries close and must be postmarked no later than September 1, 2022. Post Entries are accepted, with penalty. (Exceptions: Ridden Dressage and will be accepted until September 23rd at 5PM and will be on Wait List; no guaranteed ride; No Family Exhibitors) All entries must be complete & must include correct fees, copies of horse registration papers, statement of ownership if purchased on contract, Cognis, Health Certificate, show record, USDF/IFSHA membership card for each owner, USEF/IFSHA Membership card for each rider/driver/handler & USEF Amateur card for each Amateur rider, driver & handler, USDF membership card for each rider/driver/handler if showing in Ridden Dressage. USEF members 18 & over must complete SafeSport Training.

HORSE NAME

REG #

SEX **COLOR** **HEIGHT** **AGE** **DATE OF BIRTH** **IFSHA #** **USEF #** **USDF #**

FOR FRIESMAN HORSES ONLY:
PUREBRED **SIRE:** **DAM:**
PART BRED **Breed of Other Parent:** **BREEDER:**

Show name, date, location
 • Class where horse qualified (See page 3)

Date & Time of Arrival
 Please arrive with
 Saddle & A/C

Total Class Entry Fees

Stalls @ \$150 (no first bedding) _____
 Tack/Feed Rooms @ \$150 _____
 Hospitality Stalls @ \$80 (Socializing Only; no tack/feed equipment) _____
 Overnight Stalls @ \$100 (no first bedding) (No one day, out by 8am next morning) _____
 Day Stalls @ \$80 (no first bedding) (Same Day In & Out; No Overnight) _____
 Bedding @ \$9.00 per square x _____ = \$35.00
 Office Fee @ \$35 per horse _____
 IFSHA Non-Member Fee(s) if applicable (See Page 32 for details) _____

Make all checks payable to: IFSHA

Mail Entry Form, Documentation & Check to:
 Ryan Chambers
 P.O. Box 508
 Bonine Terre, MO
 314-719-6457 phone
 ryan@ryanchambershorse.com

CLASS #s (See Class Fee List)	RIDER/DRIVER/HANDLER NAME	Rider/Handler Assoc. No.	ENTRY FEES
		USDF #	
		IFSHA #	
	Date of Birth of Horse	USDF #	
		IFSHA #	
	Date of Birth of Horse	USDF #	
		IFSHA #	
	Date of Birth of Horse	USDF #	
		IFSHA #	

Payment by:
 Check () Credit Card ()
 Card Type: _____
 MasterCard () VISA ()
 Amex () Discover ()
 Name on Card _____

(Please Print)
 Signature _____
 Card Number _____
 Exp. Date _____
 Security Code _____

RV Vehicles/Camp Site @ \$50 per day _____
 Late Show Entry Fee @ \$50/horse _____
 USEF Fee \$23/horse (\$15 drugs/inoculations-\$8 USEF) **23.00**
 USEF Single Event Show Pass Fee \$45/person (Non-member Professional & Junior Riders Only) _____

Total Enclosed _____

There will be a charge of 3.5% of total fees if you elect to pay with credit card.

Even though this entry is paid in full, an open check CC authorization must be given in the Show Secretary before exhibitor numbers will be released.

Sub-Total Class Entry Fees _____
 Sub-Total Dressage Entry Fees _____



FEDERATION ENTRY AGREEMENT

By entering a Federation-licensed Competition and signing this entry blank as the Owner, Lessee, Trainer, Manager, Agent, Coach, Driver, Rider, Handler, Vaultor or Longeur and on behalf of myself and my principals, representatives, employees and agents, I agree that I am subject to the Bylaws and Rules of The United States Equestrian Federation, Inc. (the "Federation") and the local rules of _____ (Competition). I agree to be bound by the Bylaws and Rules of the Federation and of the competition. I will accept as final the decision of the Hearing Committee on any question arising under the Rules, and agree to release and hold harmless the competition, the Federation, their officials, directors and employees for any action taken under the Rules. I represent that I am eligible to enter and/or participate under the Rules, and every horse I am entering is eligible as entered. I also agree that as a condition of and in consideration of acceptance of entry, the Federation and/or the Competition may use or assign photographs, videos, audios, cable-casts, broadcasts, internet, film, new media or other likenesses of me and my horse taken during the course of the competition for the promotion, coverage or benefit of the competition, sport, or the Federation. Those likenesses shall not be used to advertise a product and they may not be used in such a way as to jeopardize amateur status. I hereby expressly and irrevocably waive and release any rights in connection with such use, including any claim to compensation, invasion of privacy, right of publicity, or to misappropriation. The construction and application of Federation rules are governed by the laws of the State of New York, and any action instituted against the Federation must be filed in New York State. See GR908.4.

BY SIGNING BELOW, I AGREE that I have read, understand, and agree to be bound by all applicable Federation Bylaws, rules, and policies including the USEF Safe Sport Policy and Minor Athlete Abuse Prevention Policies (MAAPP) as published at www.usef.org, as amended from time to time, as well as all terms and provisions of this Prize List. If I am signing and submitting this Agreement electronically, I acknowledge that my electronic signature shall have the same validity, force and effect as if I affixed my signature by my own hand.

RIDER/DRIVER/HANDLER/VAULTOR/LONGEUR (mandatory)

Signature: _____

Print Name: _____

TRAINER (mandatory)

Signature: _____

Print Name: _____

OWNER/AGENT (mandatory)

Signature: _____

Print Name: _____

COACH (if applicable)

Signature: _____

Print Name: _____

Parent/Guardian Signature: (Required if Rider/Driver/Handler/Vaultor/Longeur is a minor) _____

Print Parent/Guardian Name: _____ Emergency Contact Phone No. _____

Is Rider/Driver/Vaultor a U.S. Citizen: Yes No



Ridden Dressage Entry Blank

Bridle No.

**2022 IFSHA World & Grand National
Championship Horse Show**
Sept. 29-Oct. 1, 2022 • Champions Center Expo • Springfield, Ohio
Information on both sides of form must be complete.

ONLY ONE HORSE & RIDER/HANDLER PER ENTRY FORM.

For Office Use Only Received

HORSE INFORMATION

Registered Name:			
Breed	Registration # Registry Name		
PUREBRED <input type="checkbox"/> PARTBRED <input type="checkbox"/>			
Blood or Other Parent if applicable:	Sex	Height	Color
Sex	Age		Date of Birth
Name			
Class #	IFSHA #		
USEF #	Member		

CLASSES ENTERED

DAY	Class #	Level & Test	Division Date Opportunity Open AA, B, YR	Qual	Fees
Wed					
Wed					
Wed					
Wed					
Wed					
Thurs					
Thurs					
Thurs					

Total Dressage Entry Fees _____
(Transfer Dressage Entry Fees to Main Show Entry Blank)

Please type or print, **One horse and rider/handler per entry form.**
Entries close and must be **postmarked** no later than September 1, 2022.
Post Entries are accepted, with penalty. (Exceptions: Post Entry for Ridden Dressage may be accepted until Sept. 23 at 5 PM and will be on Wait List; no guaranteed ride; No Penalty Exhibition) • All entries must be complete & must include contract fees, copies of horse registration papers, statement of ownership if purchased on contract, Coggins, Health Certificate, shot record, USEF/IFSHA membership card for each owner, USEF/IFSHA Membership card for each rider/driver/handler & USEF Amateur card for each Amateur rider, driver & handler, USDF membership card for each rider/driver/handler if showing in Ridden Dressage, USEF members 18 & over must complete SafeSport Training.

RIDER

Print Name of Rider/Handler		OR ID
Address or PO Box of Rider/Handler		
City	State	Zip
Cell Phone # of Rider/Handler	Email of Rider/Handler	
USEF #	IFSHA #	
USEF #	Rider Status (check one): JR/YR <input type="checkbox"/> AA <input type="checkbox"/> OPEN <input type="checkbox"/>	

OWNER

Print Name of Legal Owner (Signature on Back)	
Address or PO Box of Owner or Agent	
City	State Zip
Cell Phone # of Owner	Email of Owner
USEF #	IFSHA #
USEF #	

TRAINER

Print Name of Trainer (Signature on Back) and Ranch/Farm Name	
Address or PO Box of Trainer	
City	State Zip
Cell Phone # of Trainer	Email of Trainer
USEF #	IFSHA #
USEF #	

USE MAIN SHOW ENTRY BLANK FOR USEF FEES, OFFICE FEE, STALLS ET AL.

Copies of Registration Papers, Applicable Association Membership Cards, Coggins, Health Certificate, Shot Records and SafeSport Completion Certification must accompany this entry.

MAKE ALL CHECKS PAYABLE TO: IFSHA

MAIL ENTRY FORM & CHECK TO:

Ryan Chambers
P.O. Box 508 ryan@ringisdeproductionllc.com
Bonne Terre, MO 63628 314-719-6447 phone

Payment method: Check () Credit Card ()
Card Type: MasterCard () VISA () Amex () Discover ()
Name on Card _____ Billing Zip Code _____ (Please Print)
Signature _____
Card Number _____
Expiration Date _____ (Month/Year) Security Code _____

There will be a charge of 3.5% of total fees if you elect to pay with credit card.

Date & Time of Arrival: _____
Staying At _____
Please stable with _____

Even though this entry is paid in full, an open check must be given to the Show Secretary before exhibitor numbers will be released.

RIDDEN DRESSAGE ENTRY BLANK FRONT (MUST ALSO COMPLETE MAIN SHOW ENTRY BLANK)



WAIVER AND RELEASE OF LIABILITY, ASSUMPTION OF RISK AND INDEMNITY AGREEMENT

For and in consideration of United States Equestrian Federation, Inc. dba US Equestrian ("USEF") allowing me, the undersigned, to participate in any capacity (including as a rider, driver, handler, vaulter, longeur, lessee, owner, agent, coach, official, trainer or volunteer) in a USEF sanctioned, licensed or approved event or activity, including but not limited to equestrian clinics, practices, shows, competitions and related or incidental activities and ("USEF Event" or "USEF Events"); I, for myself, and on behalf of my spouse, children, heirs and next of kin, and any legal and personal representatives, executors, administrators, successors, and assigns, hereby agree to and make the following contractual representations pursuant to this Agreement (the "Agreement"):

A. RULES AND REGULATIONS: I hereby agree that I have read, understand, and agree to be bound by all applicable Federation Bylaws, rules, and policies including the USEF Safe Sport Policy and Minor Athlete Abuse Prevention Policies as published at www.usef.org, as amended from time to time.

B. ACKNOWLEDGMENT OF RISK: I knowingly, willingly, and voluntarily acknowledge the inherent risks associated with the sport of equestrian and know that horseback riding and related equestrian activities are inherently dangerous, and that participation in any USEF Event involves risks and dangers including, without limitation, the potential for serious bodily injury (including broken bones, head or neck injuries), sickness and disease (including communicable diseases), trauma, pain & suffering, permanent disability, paralysis and death; loss of or damage to personal property (including my mount & equipment) arising out of the unpredictable behavior of horses; exposure to extreme conditions and circumstances; accidents involving other participants, event staff, volunteers or spectators; contact or collision with other participants and horses, natural or manmade objects; adverse weather conditions; facilities issues and premises conditions; failure of protective equipment (including helmets); inadequate safety measures; participants of varying skill levels; situations beyond the immediate control of the USEF Event organizers and competition management; and other undefined, not readily foreseeable and presently unknown risks and dangers ("Risks").

WARNING:

UNDER TEXAS LAW (CHAPTER 87, CIVIL PRACTICE AND REMEDIES CODE), A FARM ANIMAL PROFESSIONAL IS NOT LIABLE FOR AN INJURY TO OR THE DEATH OF A PARTICIPANT IN FARM ANIMAL ACTIVITIES RESULTING FROM THE INHERENT RISKS OF FARM ANIMAL ACTIVITIES.

C. ASSUMPTION OF RISK: I understand that the aforementioned Risks may be caused in whole or in part or result directly or indirectly from the negligence of my own actions or inactions, the actions or inactions of others participating in the USEF Events, or the negligent acts or omissions of the Released Parties defined below, and I hereby voluntarily and knowingly assume all such Risks and responsibility for any damages, liabilities, losses, or expenses that I incur as a result of my participation in any USEF Events. I also agree to be responsible for any injury or damage caused by me, my horse, my employees or contractors under my direction and control at any USEF Event.

D. WAIVER AND RELEASE OF LIABILITY, HOLD HARMLESS AND INDEMNITY: In conjunction with my participation in any USEF Event, I hereby release, waive and covenant not to sue, and further agree to indemnify, defend and hold harmless the following parties: USEF, USEF Recognized Affiliate Associations, the United States Olympic & Paralympic Committee (USOPC), USEF clubs, members, Event participants (including athletes/riders, coaches, trainers, judges/officials, and other personnel), the Event owner, licensee, and competition managers; the promoters, sponsors, or advertisers of any USEF Event; any charity or other beneficiary which may benefit from the USEF Event; the owners, managers, or lessors of any facilities or premises where a USEF Event may be held; and all directors, officers, employees, agents, contractors, and volunteers of any of the aforementioned parties (individually and collectively, the "Released Parties" or "Event Organizers"), with respect to any liability, claim(s), demand(s), cause(s) of action, damage(s), loss, or expense (including court costs and reasonable attorney fees) of any kind or nature ("Liability") which may arise out of, result from, or relate in any way to my participation in the USEF Events, including claims for Liability caused in whole or in part by the negligent acts or omissions of the Released Parties.

E. COMPLETE AGREEMENT AND SEVERABILITY CLAUSE: This Agreement represents the complete understanding between the parties regarding these issues and no oral representations, statements or inducements have been made apart from this Agreement. If any provision of this Agreement is held to be unlawful, void, or for any reason unenforceable, then that provision shall be deemed severable from this Agreement and shall not affect the validity and enforceability of any remaining provisions.

I HAVE CAREFULLY READ THIS DOCUMENT IN ITS ENTIRETY, UNDERSTAND ALL OF ITS TERMS AND CONDITIONS, AND KNOW IT CONTAINS AN ASSUMPTION OF RISK, RELEASE AND WAIVER FROM LIABILITY, AS WELL AS A HOLD HARMLESS AND INDEMNIFICATION OBLIGATIONS.

By signing below, that I have read, understand, and agree to be bound by all applicable Federation Bylaws, rules, and policies including the USEF Safe Sport Policy and Minor Athlete Abuse Prevention Policies as published at www.usef.org, as amended from time to time, as well as all terms and provisions of this Prize List. If, despite this Agreement, I, or anyone on my behalf or the minor's behalf, makes a claim for Liability against any of the Released Parties, I will indemnify, defend and hold harmless each of the Released Parties from any such Liabilities as the result of such claim.

The parties agree that this agreement may be electronically signed. The parties agree that the electronic signatures appearing on this agreement are the same as handwritten signatures for the purposes of validity, enforceability, and admissibility.

RIDER/DRIVER/HANDLER/VAULTER/LONGEUR OWNER TRAINER OFFICIAL STAFF VOLUNTEER COACH (IF APPLICABLE)

Signature: _____ Date: _____ Print Name: _____

Parent/Guardian Signature: (Required if Rider/Driver/Handler/Vaulter/Longeur is a minor) _____ Date: _____

Print Parent/Guardian Name: _____ Emergency Contact Phone No. _____

4.17.20

UNITED STATES EQUESTRIAN FEDERATION : 4001 WING COMMANDER WAY : LEXINGTON, KY 40511 : 859.258.2472 : FAX 859.231.6662 : USEF.ORG

© United States Equestrian Federation® All rights reserved. Reproduction without permission is strictly prohibited.



USDF Statement on Animal Welfare

The United States Dressage Federation, Inc. (USDF), a federation of over 100 independent organizations throughout the United States with a membership of nearly 30,000 members, supports the concept of ethical treatment of animals.

Dressage is a classical method of training horses, based upon the horse's natural responses, as carried out in a gradual, planned program during which the horse's athletic abilities are improved in a systematic manner. As a result, the horse becomes capable, comfortable, and responsive in partnership with the rider without the use of force. Dressage competition at various levels of achievement is the ultimate test of the training program to determine whether the desired harmony between horse and rider has been achieved.

The rules pertaining to dressage competition prohibit the use of artificial appliances, training aids, and drugs, which would force the horse to submit. Instead the emphasis is upon training and a cooperative partnership with the rider. Major competitions are carefully monitored to assure that there is no unnecessary force or harshness displayed.

Unlike other horse sports in which horses enter training at a relatively immature state, dressage training is usually not seriously begun until the horse is three or four. The top levels of achievement require five or more years of progressive training and it is not unusual to see horses in international competition in their late teens. This, in itself, places a premium on good care and soundness throughout the horse's life.

While supporting the concept of animal welfare in its broadest form, the United States Dressage Federation, Inc. also recognizes that it is unrealistic to ascribe human emotions and responses to the horse which in its wild state is a creature of flight, living a hard and precarious existence. Under domestication, the horse is assured of ample food, water, and shelter, as well as protection against infectious diseases and damaging parasites, thus leading a longer and healthier life with a high rate of survival.

As an educational organization, USDF has numerous programs, which teach people how to pursue the accepted, humane training methods. A program of certifying instructors also emphasized protecting the horse's welfare in pursuit of dressage training.

United States Dressage Federation
4051 Iron Works Parkway, Lexington, KY 40511
Phone: 859-971-2277, Fax: 859-971-7722
usdressage@usdf.org, www.usdf.org



IFSHA Grand National Championship Horse Show
SAFE SPORT TRAINING REQUIREMENT
Approved August 27th, 2018
Safe Sport USEF Rule Part 3

1. Every USEF member and Federation participant * shall abide by USEF'S Safe Sport Policy and the U.S. CENTER FOR Safe Sport Code of Conduct. * As described by the USEF Safe Sport Policy, a Federation Participant is any USEF member or non-member who participates in, or attends a USEF -licensed competition or sanctioned event.
2. In order to comply with S.534 the Protecting Young Victim's from Sexual Abuse and Safe Sport Authorization Act of 2017, the USEF Safe Sport Policy, and the Center's Safe Sport Code of Conduct, every USEF Adult member and USEF participant, with the exception of the victim is required to report sexual misconduct within 24 hours to the appropriate authorities and to the U.S. Center for Safe Sport.
3. Beginning January 1, 2019, every USEF adult member with a Competing membership must complete USEF'S Safe Sport Training, as approved by the U.S. Center for SafeSport (the center).
BOD 8/27/18
Renewing USEF members must complete SafeSport before competing.
** A copy of your SafeSport Certificate of Completion must be submitted with entry if you are 18 years old and over, unless completion is printed on your USEF Membership Card.

MAAPP

It is a recent requirement that all USEF licensed competition participants be notified that 1) they Adhere to the Minor Athlete Abuse Protection Policies (MAAPP) and 2) how to report violations and abuse allegations.

For background, the federal law known as Protecting Young Victims from Sexual Abuse and SafeSport Authorization Act of 2017 authorizes the US Center for SafeSport (Center) to develop training and policies to prevent abuse, including physical, emotional and sexual abuse, within the US Olympic and Paralympic movement. It also mandates that reasonable procedures are established for one on one interactions with minor athletes. To this end the Center has drafted MAAPP which apply to all national governing bodies for sport including the USEF.

Attached to this update is A) a letter from USEF to competition participants, B) where to obtain additional MAAPP information, including a phone number o report violations, and C) updated versions of participant forms. Signatures on these new forms will be obtained upon check in at the show.

Many thanks to USEF for the Youth Grant supporting IFSHA Youth. IFSHA Youth Members will be able to receive their IFSHA/USEF polo shirts at the IFSAH Grand National Show.

Visit the IFSHA Website at www.friesianshowhorse.com
Get the latest IFSHA Horse Show News at www.ifshaworld.com



IFSHA Grand National Championship Horse Show

Show Rules, Entry Fees and Stabling Information

1. The 2022 IFSHA GRAND NATIONAL HORSE SHOW is a licensed United States Equestrian Federation competition. Every Friesian and Part Bred Friesian class offered herein which is covered by the rules and specifications of the current Federation Rule Book will be conducted and judged in accordance therewith. The rules of the Federation take precedence over the rules of any other association. Exhibitors are encouraged to refer to the current Federation Rule Book, which is available online at www.USEF.org. A Federation Steward approved by the Show Manager shall be present to administer these rules at the show.
2. Opportunity Classes: Will be conducted in accordance with USEF RULES. There will be no USEF membership requirement for Opportunity Classes. Entries may show in other classes at this show if their breeding allows.
3. Show rules will be available in the horse show office. USEF AND IFSHA show rules are also available at www.USEF.org. If you have any questions, please contact Sandy Jacob at 608-201-5922 or hndsnhves2@aol.com.
4. Awards: Champion, Reserve Champion and Top Five Ribbons to be Awarded for Grand National Championship Classes. All Friesian Classes are to be placed through 15.
Opportunity Classes to receive ribbons thru 5th place
5. All Friesian and Part Bred Friesian Horses to be shown must have received a certificate of membership from the International Friesian Show Horse Association (IFSHA) See FR 101. Copies (front and back) of breed registration papers must be mailed with entries.
6. The Horse Show Executive Committee reserves the right to itself, to interpret all questions and conditions in regard to or arising out of, or incident to the show, without claims for damages or recourse of any kind. Any question not covered in these rules and regulations shall be decided by the Horse Show Executive Committee, their decision is to be final. The Horse Show Executive Committee is to consist of the Horse Show Manager, Horse Show Secretary and the IFSHA Executive Director.
7. All Entries are Accepted with the understanding that the IFSHA Grand National Horse Show and Champions Center Expo will not be held responsible for any loss, damage or any injury to any horse exhibited or any article of any kind. All horses shall be under the control and direction of the Show Committee but solely at the risk of the exhibitor, who will be responsible for any loss, damage or injury to any person, animal or property occasioned by him, his agents or employees. Or by any animal owned or exhibited by him and shall indemnify and hold harmless the Federation the IFSHA Grand National Horse Show, the International Friesian Show Horse Association, Judges, Staff of the IFSHA Grand National Horse Show, IFSHA Board of Directors, Members of IFSHA and the Champions Center Expo against any and all loss, damage and liability thus occasioned, including but not limited to any and all legal costs, including attorney fees, which may be incurred as a result thereof. The submission of any entry form to the IFSHA Grand National Horse Show (Previously known as the IFSHA World and Grand National Horse Show) shall constitute an acceptance by each person signing same of the provisions herein set forth.



IFSHA Grand National Championship Horse Show

Show Rules, Entry Fees and Stabling Information

8. All owners and exhibitors will be held responsible for any damage incurred by them or their agents to barns or Champions Center Expo properties on the show grounds and will be billed accordingly. Stalls must be left in their original condition with the exception of shavings and horse manure. Anything brought to the grounds must be removed from the grounds.
9. **UPDATED USEF Membership Statement**

Life, Senior Active, and junior Active members shall be eligible to participate in all classes at regular competitions, eventing competitions at the modified level or above and combined driving competitions at the advanced level dressage, reining and vaulting competitions and endurance rides.

A non-member may participate as a handler, writer, driver, owner, agent, coach or trainer at regular competitions, eventing competitions, dressage competitions, reining competitions, and combined driving competitions upon payment of a \$45.00 Show Pass Fee.

Participants in the following classes are exempted from the requirements of this rule 1) leadline 2) exhibitions#) games and races 4) classes for 4H members 5) walk/trot 6) USDF introductory level tests, pas de deux and quadrille classes 7) NRHA endorsed reining competitions 8) Opportunity classes 9) citizens of other nations who have proof, in English, of current membership and in good standing of their own National Federation 10) USEA beginner novice and 11) assistant handlers in dressage sport horse classes.
10. To be eligible to participate as a rider, driver, handler, vaulter, longeur, owner lessee, agent, coach or trainer at Regular Competitions persons must be Members of the Federation as provided in By law 203, and have paid the respective Breed/Discipline Dues. For exemptions, see Gr901.9 Non member participants must pay a non-member Single Event Show Pass. Amateurs must be members of the USEF.
11. **UPDATED MOTOR VEHICLE STATEMENT:**

Minors that do not have a valid driver's license which allows them to operate a motorized vehicle in the state in which they reside will not be permitted to operate a motorized vehicle of any kind on competitions grounds of a licensed competition. This includes but is not limited to golf carts, motorcycles, scooters, or farm utility vehicles. Minors who have a valid temporary license may operate the above describe motor vehicles as long ass they are accompanied by an adult with a valid driver's license. The parent/legal guardian or individual who signs the entry blank as a parent or guardian of a minor operating a motorized vehicle in violation of this rule are solely responsible for any damages claims, losses, or actions resulting from that operation. Violations of this rule will be caused for penalties against those responsible for the child committing the offense. The unsafe use of personal electronic transport devise, (as determined by, and at the sole discretion by the competition official and management), that do no require a driver's license to operate, including but not limited to Segway's, hoverboards, and single wheeled scooters, is prohibited on competition grounds. Operating such devices in areas where people gather may be deemed "unsafe use" if there is a risk of harm to others. If the operator of a device is a minor, the parent/legal guardian or individual who signs the entry blank as a parent or guardian of a minor operating the device in violation of this rule is accountable and may be subject to penalties.

Wheelchairs and other mobility assistance devices for individuals with disabilities are exempt from these rules.



IFSHA Grand National Championship Horse Show

Show Rules, Entry Fees and Stabling Information

12. Show Manager reserves the right to refuse, accept conditionally, or cancel any entries, disqualify any riders or exhibitors, prohibit entries and to cancel award prizes, with out claim for damages; to change any course, to cancel or combine any unfilled classes (less than 3 entries) or to reschedule classes; and to change rings, judges or other officials. Show Management reserves the right to change, reschedule or cancel classes due to scheduling or weather.
13. **CLASS SCHEDULE:** The Class Schedule included in the booklet is **TENTATIVE**. Please Note the Following: Management reserves the right to adjust the class schedule and class order. If entries warrant, performance may begin earlier or later than published. If entries warrant, classes may be split or combined. **PLEASE CHECK WITH THE HORSE SHOW OFFICE FOR EACH DAY'S FINAL SCHEDULE.**
14. **Judging:** Championship Class Judging will be by a three judge panel. Exception: Dressage. Each class will have a call judge determined on a random rotating basis . Placings will be based on the combined scores of all judges. The Call Judge's placement will break all ties. The entry with the highest Total points will be awarded Champion; the entry with the second highest total score will be awarded Reserve Champion and the remainder of the Top Five (unranked) will be third, fourth and fifth highest scores. Opportunity Class Judging will be by a single Judge.
15. **Carriage Driving Classes:** Will be conducted in accordance with USEF RULES. Exhibitors are encouraged to refer to the current Federation Rule Book, which is available online at www.USEF.org.
16. **Marathon Vehicles** will be allowed in all driving classes except Turnout classes and Concours d'Elegance.
17. **Concours d Elegance** will be judges as a separate class. The winner will be the turnout which, in the opinion of the judges, presents the most elegant effect. This will include vehicle, harness, appointments, horses, driver, passengers, grooms, etc. but above all general impression is most important. Period costumes are prohibited. (See Federation Carriage Pleasure Driving Rule CP 230).
18. **Costume Driving.** This class shall be conducted in accordance with Carriage Pleasure Driving Rule CP 217. Exception: Whips shall wear costumes which show creativity, imagination and freedom of expression. No metal costume elements. No strong trot is called for.
19. **DRIVE AND Ride Classes:** In Open Drive and Ride, the whip and rider may be different individuals. In Walk/Trot Drive and Ride, the whip and rider must be the same person.
20. **Driven Dressage** will be conducted in accordance with USEF RULES. Exhibitors are encouraged to refer to the current Federation Rule Book, which is available online at www.USEF.org.
21. **Lead Line Costume Class** will be conducted in accordance with USEF RULES. Exhibitors are encouraged to refer to the current Federation Rule Book, which is available online at www.USEF.org.
22. **Friesian Horse Grooming Note:** In accordance with European standards , the Friesian horse is not required to be show clipped to be show. Judges are not to penalize the exhibitor for an unclipped horse.
23. All horses may be drug tested on a random basis.
24. All horses 2 years old and over, may have their hooves measured by the Show Steward on a random basis.
25. **Class Fees:** Grand National Championship Class Fees including Concours' d Elegance and Dressage classes with the exception of Junior Exhibitors. Class Fees for Junior Exhibitors are \$50.00 Opportunity Lead Line Class, Open to All Breeds are \$25.00.



IFSHA Grand National Championship Horse Show

Show Rules, Entry Fees and Stabling Information

26. Entries: TO BE ACCEPTED, the entry blank must be COMPLETELY filled out and accompanied by a check cover all fees, plus proof of Equine Influenza Virus and Equine Herpes Virus vaccinations within six months of show dates (See GR845) and proof of a current negative Coggins Test within Twelve (12) of show dates for all horses. In addition, for out of state horses, Federal Law require a health certificate within 30 days of traveling. In the case of a minor the entry blank MUST be signed by the parent or guardian. If there is not trainer, the entry blank must be signed by the owner. All participants in the competition 18 years and older must provide a copy of Safe Sport Certificate of Completion or USEF Membership Card indicating Safe Sport completion. Send the completed entry blank along with all entry fees, stall fees, all other fees and copies of front and back of the Certificate of Registration, SafeSport Certificate of Completion, USEF Membership Cards, IFSHA Membership Cards and if applicable, USEF Amateur Card and/or USDF Membership Cards to Show Secretary, Ryan Chambers. Make Checks payable to IFSHA. Numbers will be released with full payment and all paperwork. No entry will be accepted and processed without the above.
27. CLOSING DATE IS SEPTEMBER 1, 2022. Post Entries will be accepted with penalty. Late entries received after 9/1/2022 will pay a late fee of \$50.00 per horse.
DRESSAGE ENTRIES CLOSE SEPTEMBER 1, 2022.
All Dressage entries received after that will be placed on a "Wait List" but no guaranteed ride.
28. Post Entry for Ridden Dressage may be accepted until September 23, 2022 at 5 pm
And will be on "Wait List" no guaranteed ride. No Penalty Exhibition.
29. Dressage (English) limited to 60 Rides: Rides will be assigned as entries are received. A wait list will be maintained for any entries above the 60 rides. Dressage classes may not run in listed order. Official times will be posted in the Horse Show Office by noon the day preceding the first day of competition.
(Ride times may not change except in compliance with GR830.5)
30. Dressage Times, Provisional Times will be emailed if time permits. Official Times will be posted at the Horse Show office by noon the day before the start of the competition. It is the responsibility of the competitor to check official ride times. Adequate time intervals cannot be guaranteed when riders enter more than one horse in any class.
31. Class Calls: Due to unforeseeable problems with any mechanical device, the PA system and Paddock calls MUST be considered a courtesy. It is the responsibility of the exhibitor to be sure that his horse is at the gate at the prescribed time. Every effort will be made to maintain a working PA system to carry class calls, however no protest will be upheld, nor will any class be changed on the basis of PA malfunctions alone. The two-minute gate rule will be strictly enforced. The in- gate will be closed two minutes after the first horse enters the ring.
32. REFUNDS Entries will only be refunded (Less a \$50.00 office fee) if a Vet Certificate is received within five days of the event. Stall and pre ordered Shavings will not be refunded. Refunds will be issued 30 days after the show has been closed and audited.
33. Federation Fees: For Every Horse Participating in any competition recognized by the Federation, a \$23.00 Federation fee will be collected. (\$13.00 for USEF and \$8.00 shall be a drugs and medications fee to provide for research, inspection and enforcement of rules regarding use of medications and drugs. See Federation GR407.1,2,3.



IFSHA Grand National Championship Horse Show

Show Rules, Entry Fees and Stabling Information

34. USEF Single Event Show Pass Fee is due from any participant in an Open or Junior Rider Class (including at least one owner per horse) who does not have a current USEF membership card.
35. USEF Adult Amateur: Amateur cards are no longer available for non-members. Only active Federation members may obtain amateur certification. Every person who has reached his or her 18th birthday and competes in classes for amateurs under Federation rules must possess current amateur certification issued by the Federation.
36. Office Fee of 35.00 per horse
37. Friesian Membership: All owners/lessees and horses must be members of IFSHA. Memberships for horses and owners are to be completed at least 5 days prior to the start of show with IFSHA classes.
38. Friesian Non-Owner, Non-member Participant. A Non-Owner, Non Member Fee of \$25.00 per adult or \$20.00 per Junior will be assessed if applicable.
39. Stalls (No First Bedding) Whether occupied by horses, feed or tack, will be available for a fee of \$150.00 for the entire show. Move in Day is Wednesday and Move out by 10:00 on Sunday. Overnight Stalls are \$100.00 for use on one day and night with a move out time of 9:00 am the next Morning. Day Stalls are \$80.00 per stall for use for in and out in 1 day. Hospitality Stalls: You may use stall(s) for socializing and farm information for a fee of \$80.00 each for the entire Show. Front panels may be removed but must be replaced. If exhibitor does not replace the panels a fee of \$25.00 per panel will be assessed to the exhibitor. No feed or tack may be stored in the Hospitality Stalls. Stall Availability: 10 by 10 permanent stalls, with asphalt flooring and sliding doors will be available on Wednesday at 9:00 AM , September 28th, 2022. All stalls must be vacated by Sunday, Oct 2, 2022 at 10 AM. Early Arrival must be pre arranged with Sandy Jacob. IFSHA Show horses coming in on Monday will be assessed a \$20.00 fee for Monday. Please contact Sandy Jacob at 608-201-5922 or hndsnhves2@aol.com.
40. Bedding: NO OUTSIDE BEDDING IS ALLOWED. Shavings/Bedding is available at the show for (Tiz Whiz current rate) One pre show delivery will be made to stalls in advance of the show. Please place your orders on the exhibitor entry forms. Additional bedding will be available to the exhibitor during the show at the Tiz Whiz Office.
41. Videography and Photography: IFSHA Grand National Horse Show does NOT allow free lance photographers and videographers. Only official vendors, i.e. Videographer "Be in View" and "Avalon Photography", may photograph and videography horses in the show arena. This includes the entire area of the Indoor Arena. Only Trade Fair Vendors are allowed to work on the show grounds and sell their products while the facility is under contract for the IFSHA Grand National Show. If professional equipment is observed in the Show Arena, you will be asked to remove your equipment. There shall be no signage allowed advertising other videography, or photography companies.
42. Food Service: During the competition, food service will be available on the competition grounds.
43. Sharps must be disposed of in the containers provided for that purpose. Red biohazard containers can be found throughout the barn area. Do not place needles, syringes and medical waste in the trash. Show Management will fine any individuals, including trainers, owners, exhibitors or their agents up to \$1000.00 for improper disposal of needles or other sharp disposable instruments.



IFSHA Grand National Championship Horse Show

Show Rules, Entry Fees and Stabling Information

44. **Protective Headgear:** Is encouraged at all times on the grounds and in any and all classes. ASTM/SEI approved protective headgear is required for riders in all Dressage, Hunter, Jumper and Hunt Seat Equitation classes, including Hunter Hack. Junior riders in said classes, and Dressage exhibitors not cross entered in another Division, are required to wear said headgear when riding anywhere on the competition grounds. Any exhibitor may wear said head gear and/or equestrian sport protective vest in any division or class without penalty from the judge. All rules of the USEF will be followed for protective headgear.
45. **Welfare of the Horse:** Upholding the welfare of the horses exhibited here is of primary concern to our management team. We require that all horses are treated with kindness, respect and compassion they deserve and they should never be subject to mistreatment. Owners, trainers, riders and grooms or their agents, must use reasonable care in the handling and treatment of the horses owned and or placed in their care for competition or for any other purpose. We will provide for the continuous well being of the horse by vigorously enforcing the rules of the USEF which pertain to the welfare of the horse. Exhibitors are cautioned that GR839 which defines the USEF policy on abuse, GR844 which pertains to poling, and GR803 which pertains to the use of whips, will be strictly enforced. No excessive luse of whips or poling will be tolerated. Violators are subject under the above rules to elimination from competition and to protest or charge with resulting formal proceeding which may result in severe fines, suspensions or other penalties. All incidents will be reported un the Steward's Report and reviewed by USEF's Executive Director/CEO for possible further investigation and charges for hearing before USEF'S National Hearing Committee.
46. **NO SMOKING: SMOKING IS PROHIBITED IN ANY BUILDING AND AROUND ANY OF THE BARNS.** Show Management will assess a fine of \$100.00 per incident to anyone found smoking in a non- smoking area.
47. **Dogs** must be on leashes no longer than 6 feet at all times on the show grounds and in the show barn. Individuals must not lead a dog while mounted. No loose dogs are allowed. Per USEF rule GR1301.6, dog owners who fail to comply with these rules will be issued a Yellow Warning Card and may be subject to penalties under chapter 6 and 7.
48. **Vehicles:** Motor vehicles are prohibited with stable facilities except to load and unload horses, tack and or feed unless authorized by show management. After unloading, all vehicles must be parked in a designated parking place for that particular vehicle as soon as unloading is completed.
49. **Parking:** Specific areas have been set aside for parking of horse vans and trailers. All trailers must be parked at the north end of the stabling area. All trailers must be parked away from the building with the exception of the Horse Show Farrier. All violators will be ticketed and towed at the owner's expense.
50. Showers are available in the front restrooms area. Nighttime access is made by using the front doors to the restrooms located on the south side of the Champions Center at the main entrance.
51. **NO firearms, fireworks or open fires** are permitted.
52. **Show Fines:** The following fines will be enforced by the show on all show participants in violation of local rules: a) Smoking in Buildings and around the barn areas, b) Improper disposal of sharps or medical waste: Up to \$1000.00



IFSHA Grand National Championship Horse Show

Show Rules, Entry Fees and Stabling Information

53. INDOOR On Deck- Set for each Individual Event and footing is comprised of washed concrete sand
54. INDOOR Arena- Full Arena is 200 feet long by 125 feet wide The Footing is comprised of washed concrete sand.
55. OUTDOOR Work Ring-(uncovered) is 300 feet long and 200 feet wide. The footing is comprised of masonry sand
56. PAVILION Warm Up- 74 feet long and 130 feet wide. The footing is comprised of masonry sand.
57. PAVILION- Is 274 feet long and 130 feet wide. The footing is comprised of masonry sand.
58. GRASS Court- Footing is grass with sand clay base.
59. HORSE SHOW OFFICE: The Show Office will be open on Wednesday 9-28-22 from 9-5pm. The office will open one hour prior to the first session each day and remain open for 30 minutes after the last class of each day. The Horse Show office Telephone Number is 314-717-7683

2022 IFSHA GRAND NATIONAL SHOW ENTRY REQUIREMENTS

- IFSHA MEMBERSHIP FOR HORSE AND OWNER
- USEF MEMBERSHIP (All Adult Amateur Rider/Exhibitors are required to be a USEF member)
- USEF HORSE Membership
- Safe Sport Certificate of Completion (If 18 & Older) Not required if printed on your USEF Membership Card

HEALTH INFORMATION

Coggins Certificate

Health Certificate if traveling from outside of Ohio

USEF VACCINATION RULES GR 845

1. At Federation Licensed competitions, horse 7 months of age, entering the show grounds must be accompanied by documentation of Equine Influenza Virus and Equine Herpes Virus (Rhino pneumonitis) vaccinations within six (6) months of entering the show stables. Horses not in compliance with this rule may be required to leave the competition grounds upon request of the Competition Management. Documentation should consist of one of the following methods mentioned below. The frequency of vaccine administration should be per the vaccine manufacturer's or veterinarian's recommendations. It is recommended that vaccines are administered under the direction of a veterinarian.
 - 1A. In the case of vaccines administered by a veterinarian, the exhibitor upon request by Competition Management must provide documentation from the veterinarian on documenting the horse in question has received the vaccinations, name of the vaccines and date of administration.

Contact Sandy Jacob at hndsnhves2@aol.com or 608-201-5922 if you would like to sponsor a presentation of a trophy in 2023. Yearly presentation sponsorship \$150.



IFSHA Grand National Championship Horse Show

Show Rules, Entry Fees and Stabling Information

- 1B. In the case of vaccines administered by a person other than a veterinarian, the exhibitor, upon request of Competition Management, must provide a receipt of the vaccine purchase which is signed by the owner, or agent with care, custody and control of the horse. Vaccine Name, Serial Number, Expiration Date of the Vaccine and date the vaccine was administered to the horse, must be supplied to the Competition Management.
- 1C. In the case of a horse that is unable to receive either of the vaccinations due to a history of Adverse Reactions, the exhibitor, upon request by the Competition Management must provide a Letter from the veterinarian on Official Letterhead stating that the horse in question cannot be vaccinated due to medical concerns a a log of temperatures taken twice daily for the 7 days prior to entering the competition grounds. The log of temperatures is to be provide to the Competition Management, Steward or Technical Delegate.

Competition Management may not amend or enhance vaccination requirements with out prior approval of the USEF Veterinary committee BOD 1/17/15 Effective 12/1/15 BOD 1/16/16 Effective 4/1/16

The IFSHA Grand National Horse Show requires proof of vaccinations to be included with the show entry forms.

ENTRY FORM

The entry form needs to be filled out completely. Payment for stalls, shavings, classes to be enclosed with entry.

Please Carefully List:

- Use the Registered Name of the Horse. The Show Office does not know the nickname or barn name of your horse. We cannot verify with USEF for records or points.
- Class # , Horse and Rider
- Use a separate entry form for each horse
- If a change is made, it is the responsibility of the exhibitor/owner's to come to the show office and make a scratch/add/rider/change. An adult is required to make the change. Again, the office is not aware of who is on the horse in the ring and con only go by the entry form if the office is questioned by USEF.
- PAGE 2 of the Entry Form: Please make sure all information is completely filled out legibly with all required signatures.
- RIDDEN DRESSAGE: Fill out the dressage Entry Blank for Each Horse/Rider combination. Transfer dressage class Fees to Main Show Entry Blank for your horse and add in all other charges. (stall, office fees, other class fees and such) to reach total fees.

PLEASE SIGN ALL RELEASES.



MAAP

MINOR ATHLETE ABUSE PREVENTION

— REQUIRED OF ALL PARTICIPANTS —

LEARN ABOUT MAAP POLICIES

Read about these and more at
usef.org/MAAPP



SafeSport Training



One-On-One Interactions



Local Travel



Social Media and
Electronic Communications

REPORT VIOLATIONS



usef.org/safe-sport/reporting
859-225-6915



USDF Membership Benefits: USDF is dedicated to education, the recognition of achievement, and promotion of dressage. For details on member benefits, including educational programs, awards, and other opportunities, refer to the *USDF Member Guide* or the USDF website at www.usdf.org.

**This
competition
is recognized
by USDF
for 2022**

Membership Requirements for USEF-licensed/USDF-recognized Competitions: Owners and riders, including foreign riders and owners who are not residents of the US, wishing to participate in a USEF-licensed/USDF-recognized competition as a rider or owner/lessee, must have either a USDF Group Membership (GM), Participating Membership (PM), or have a USDF Non-Member (NM) identification number and pay the USDF Non-Member (NM) fee. (Note: USDF Business Members can own horses but cannot compete as riders with their USDF Business Membership.)

Horses competing at USEF-licensed/USDF-recognized competitions must have either a USDF Horse Identification (HID) number or a USDF Lifetime Horse Registration (LHR). Proper credentials or verification certificates must be presented to the competition secretary.

Riders and owners wishing to participate in a USEF-licensed/USDF-recognized competition, and not able to present the competition secretary with verification of a USDF membership or NM identification, and USDF LHR or USDF HID, must complete a USDF Competition Affidavit Form and pay the \$5 affidavit filing fee. A copy of a completed affidavit form from another competition may also be used for verification purposes for up to 60 days. (Exception: Affidavits cannot be used at Great American Insurance Group/USDF Regional Dressage Championships.)

Exceptions:

- Horses competing only in Individual Breed Classes (IBCs) at DSHB competitions, sires and dams of horses in DSHB group classes, where those sires or dams are not actually competing in the same competition, horses competing only in breed restricted dressage or DSHB classes at Regular Competitions (e.g. all Arabian, all Friesian, or all Morgan classes), or in USDF Introductory Level tests, pas de deux or quadrille, are exempt from this requirement. Also exempt are horses ridden in leadline, exhibitions, games and races, classes for 4-H members, walk-trot, academy, and opportunity classes.
- Riders and owners/lessees competing only in classes which are exempt from the USDF HID requirements are also exempt from the USDF NM identification number and NM fee requirements. Also exempt are handlers of horses competing in DSHB In-Hand or Group classes.

Memberships Defined

Participating Membership (PM): A membership issued to an individual directly by USDF. The membership year is December 1 through November 30. PMs are available for 1-year (\$90), 5-years (\$360), or life (\$1,800). A USDF Youth Participating Membership (YPM) is available for individuals who have not reached their 21st birthday by December 1 of the current membership year (\$72). A PM allows the member to compete at USEF-licensed/USDF-recognized competitions and to participate as a rider and/or owner/lessee for all Adequan®/USDF Year-End Awards and the Great American Insurance Group/USDF Regional Dressage Championship program.

Group Membership (GM): A membership issued to an individual by USDF when the member name and dues are submitted to USDF through an affiliate Group Member Organization (GMO). The GM year begins December 1 and ends November 30. A GM allows the member to compete at USEF-licensed/USDF-recognized competitions and participate in the USDF Rider Awards Program and the USDF Regional Schooling Show Awards Program.

Business Membership (BM): A membership that runs December 1 through November 30 and is issued to a business or organization directly by USDF. The USDF BM (\$240) offers a wider variety of advertising benefits. BMs satisfy requirements of horse ownership only.

Non-Member (NM) Identification Number: For each USDF NM owner/lessee and USDF NM rider there will be a USDF NM fee of \$35 per competition that must be collected by the show secretary and submitted to USDF, along with the USDF Report of Fees document and the \$5 affidavit fee and Competition Affidavit Form if the person cannot provide a copy of their USDF NM card. Owners/lessees or riders exempt from the NM number requirements are also exempt from paying the USDF NM fee. If there are multiple owners of a horse and all are NMs, only one of the owners must pay the NM fee. If the horse has at least one owner who is a current USDF PM, GM, or BM there is no NM fee assessed. Competition management will be invoiced for all applicable USDF NM fees not received with the USDF post-competition paperwork, along with a report listing all USDF NMs. Competition management is then required to submit the NM fees within 30 days to the USDF. An individual with a USDF NM identification number is not eligible for any USDF membership benefits. Once a USDF NM number has been assigned, a USDF NM card can be obtained from the USDF website.

Horse Identification (HID) Number: A one-time tracking number for horses (\$35). Scores earned by a horse with an HID number will be recorded, but will NOT be counted towards Adequan®/USDF Year-End Awards. A horse with an HID number is not eligible to compete in Great American Insurance Group/USDF Regional qualifying or championship classes. An HID number can be upgraded to a Lifetime Horse Registration (LHR) for a fee of \$80. If a horse has a USDF LHR it does not need an HID number. An HID number is a one-time fee that does not need to be renewed.

Lifetime Horse Registration (LHR): A horse with an LHR (\$115) is eligible for Adequan®/USDF Year-End Awards, and eligible to compete in Great American Insurance Group/USDF Regional qualifying and championship classes, assuming requirements for the owner and rider are met. If a horse has an LHR it does not need an HID number. An LHR does not need to be renewed.

How to Join USDF

Applications for USDF Participating Membership (PM), Business Membership (BM), Horse Identification (HID) number, and Lifetime Horse Registration (LHR) may be found in the following locations:

- On the USDF website: www.usdf.org. You can submit the application online or download the form and fax or mail it to the USDF office.
- In the show office at USEF-licensed/USDF-recognized competitions classified by USEF as Dressage Competitions, and Regular Competitions which are open to all breeds.
- By calling or writing the USDF office at (859) 971-2277, 4051 Iron Works Parkway, Lexington, KY 40511

The effective date of membership is the date the form and correct fees are received in the USDF office or, if applying at a competition, the date accepted by the competition secretary, provided the application is signed and dated by the competition secretary, member, and/or horse owner on that same day.

**The 2022 IFSHA Friesian
Grand National Championship
Horse Show**

Sandy Jacob
Show Manager
8846 W County Road M
Edgerton, WI 53534



INTERNATIONAL
FRIESIAN SHOW HORSE
ASSOCIATION



**2022 IFSHA
GRAND NATIONAL SHOW SPONSORS**

Ashby Equestrian Center - Day Sponsor

Amercian Saddle Horse Association Class Sponsor

Anonymous Sponsor - Nancy Nathanson Perpetual Trophy

DJ and Craig Brown - Gareth A. Selwood Perpetual Trophy Sponsor

Cindy Davis - Classes Sponsor

FHANA

Pam Gardner - Dennis Gardner Memorial - Perpetual Trophy

Grace Greenlee - Perpetual Trophy

Tom and Sandy Jacob - Joyce V. Rohloff - Perpetual Trophy

JRPR Speciality Awards

Manely Long Hair - Class Sponsor

Maxwell Financial - Show Sponsor

Massey Ferguson - Show Sponsor

Shadow Phax Stables - Carriage Division Sponsor

Shadow Phax Stables - Dressage Division Sponsor

Petra Paspalovski - Classes Sponsor

The Riehle Family - Harper JR Perpetual Trophy

Mary Ellen Weisner - Class Sponsor

USEF